



ESCO  
European Support & Coordination Office  
Technical Support

Lyoner Str. 38 • D-60528 Frankfurt/Main • Germany • Tel. +49 69 6638-0 • Fax +49 69 6638-229

---

# Amiga CD32

## Engineering Change Request

Document distributed August 31, 1993

### Contents

WC3279                      Release of CDGS rev.4 PCB assy to production

Note: PCB rev. 4 is currently only used in production for France (see also ESCO Technical Bulletin #15)!

---

For further information, questions etc. you are welcome to contact:

<u>Name</u>	<u>Responsibility</u>	<u>Email</u>	<u>cc:Mail</u>	<u>Phone</u>
Jan Nymand	Amiga Product Range	cbmehq\nymand	Jan Nymand at CBM-ESCO	+ 49 (0) 69 66 38 221
Thomas Giger	PC/OEM Products	cbmehq\giger	Thomas Giger at CBM-ESCO	+ 49 (0) 69 66 38 202
Martina Unruh	Document Requests etc.	cbmehq\unruh	Martina Unruh at CBM-ESCO	+ 49 (0) 69 66 38 175

Commodore <b>ENGINEERING CHANGE REQUEST (SHEET 1)</b>	ECR NO. <i>WC 3279</i>	DATE	SHEET
		<i>8/11/93</i>	1 OF 35

REASON FOR CHANGE
<p style="text-align: right;">315</p> <p>RELEASE <u>CDGS REV. 4</u> PCB ASSY TO PRODUCTION</p> <p style="text-align: right;"><b>ENGINEERING APPROVED</b></p>

AFFECTED PRODUCTS	TYPE OF CHANGE
<i>CD 32</i>	<input checked="" type="checkbox"/> REGULAR <input type="checkbox"/> EMERGENCY <input type="checkbox"/> DOC. MAINTENANCE

DRAWINGS TO BE REVISED OR DRAWN		REVISION	
DRAWING NO.	TITLE	FROM	TO (NEW)
<i>365436</i>	<i>PCB ASSY, REV. 4, CDGS</i>	—	<i>NEW</i>
<i>365437</i>	<i>SCHEMATIC, CDGS REV. 4</i>	—	<i>NEW</i>
<i>365438</i>	<i>ARTWORK, CDGS REV. 4</i>	—	<i>NEW</i>
<i>365439</i>	<i>FAB DWG, CDGS REV. 4</i>	—	<i>NEW</i>
<i>365159</i>	<i>BOTTOM ASSY, CDGS PLAYER</i>	<i>D</i>	<i>E</i>
<i>513515</i>	<i>SHIP ASSY, CDGS PLAYER</i>	<i>G</i>	<i>H</i>
DESCRIPTION OF CHANGE			
<i>365158</i>	<i>MAIN ASSY, CDGS PLAYER</i>	<i>D</i>	<i>E</i>

*365159 - BOTTOM ASSY*

- 1) ADD 365159-03, BOTTOM ASSY: PAL-FRANCE ON SHEET 1*
- 2) ADD 365436-03, PCB ASSY, CDGS REV. 4: PAL-FRANCE TO ITEM 5 ON SHEET 2*
- 3) DEFINE -03 COLUMN FOR PAL-FRANCE ON SHEET 2.*

*CONTINUED ...*

DISTRIBUTION			REVIEW AUTHORIZATION				ORIGINATOR (PRINT)	
WFC	APV	LOCATION	APP	SIGNATURE	HOLD	REJ	DATE	
	<input checked="" type="checkbox"/>	W.C. ENG.	<input checked="" type="checkbox"/>				<i>8/11/93</i>	<i>BRIAN KENIMORE</i>
		W.C. SAF.						<i>GEORGE ROBBINS</i>
<input checked="" type="checkbox"/>		BSW ENG.						IMPLEMENTATION
		BSW SAF.						<input checked="" type="checkbox"/> RUNNING CHANGE <input type="checkbox"/> NEW PRODUCTION <input type="checkbox"/> W.I.P. <input type="checkbox"/> F.G. STOCK <input type="checkbox"/> IN FIELD
		HK						REMARKS
<input checked="" type="checkbox"/>		PHILIPPINES						
REASON FOR HOLD/REJECTION				DISPOSITION OF OLD REVISION PARTS				
				SCRAP	REWORK	USE AS IS	RTV	
				DC AUTH. PREPARED ECO				
				SIG:			DATE:	
				ECO #				

Commodore <b>ENGINEERING CHANGE          REQUEST (SHEET 2)</b>	ECR NO.	DATE	SHEET
	WC 3279	8/11/93	2 OF 35

DESCRIPTION OF CHANGE

365158 - MAIN ASSEMBLY

- 1) ADD 365158-03, MAIN ASSEMBLY: PAL-FRANCE ON SHEET 1.
- 2) ADD 365159-03, BOTTOM ASSEMBLY: PAL-FRANCE ON SHEET 2,  
ITEM 5.
- 3) DEFINE -03 COLUMN FOR PAL-FRANCE ON SHEET 2.

513515 - SHIP ASSEMBLY

- 1) ADD 365158-03, MAIN ASSY: PAL-FRANCE TO ITEM 7  
ON SHEET 2.
- 2) DELETE 365158-01, MAIN ASSY: PAL FROM -05 COLUMN  
ON ITEM 8, SHEET 2.
- 3) DELETE 251846-04, CABLE, RF (PAL) FROM -05 COLUMN  
ON ITEM 16, SHEET 2.
- 4) ADD 365435-01, CABLE 21 PIN SCART TO 8 PIN MINI-DIN TO  
ITEM 18, SHEET 2.





PART NUMBER		DESCRIPTION		REVISIONS		DATE	APPROVED
365159-01		BOTTOM ASSEMBLY: PAL / CDGS PLAYER		1	ADVANCE ENGINEERING RELEASE	2/3/93	G. Robbins
365159-02		BOTTOM ASSEMBLY: INTSCT CDGS PLAYER		2	Revised per ECO 930062	2/24/93	B. Darlring
-03		BOTTOM ASSEMBLY: PAL-FRAME / CDGS PLAYER		3	Revised per ECO 930085	3/12/93	D. Shannon
				4	Revised per ECO 930119	4/09/92	D. Shannon
				A	PILOT PRODUCTION RELEASE	4/15/93	G. Robbins
				U	Revised per ECO 930181	5/21/93	D. Shannon
				C	Revised per ECO 930197	6/4/93	D. Shannon
				D	Revised per ECO 930243		
				E	REVISED		
					ADD		

374193

365159

1. SHEET 3 OF 3 SIZE D  
 ASSY. DWG 365159  
 NOTES:

© 1992, 1993 COMMODORE ELECTRONICS, LTD.  
 INFORMATION CONTAINED HEREIN IS THE UNPUBLISHED AND  
 CONFIDENTIAL PROPERTY OF COMMODORE ELECTRONICS, LTD.  
 USE, REPRODUCTION OR DISCLOSURE OF THIS INFORMATION  
 WITHOUT THE PRIOR WRITTEN PERMISSION OF COMMODORE  
 IS STRICTLY PROHIBITED. ALL RIGHTS RESERVED

Commodore	BOTTOM ASSEMBLY / CDGS PLAYER		Drawn by	APH	Drawing #	365159
						Sheet 1 of 3



PART NUMBER	DESCRIPTION	REVISIONS	DATE	APPROVED
513515-01	SHIPPING ASSEMBLY CDGS PLAYER UN		2/3/93	G. Robbins
513515-02	SHIPPING ASSEMBLY CDGS PLAYER CN	1 ADVANCE ENGINEERING RELEASE	3/12/93	D. SHANNON
513515-03	SHIPPING ASSEMBLY CDGS PLAYER UK	2 REVISED PER ECO 930062	3/26/93	D. SHANNON
513515-04	SHIPPING ASSEMBLY CDGS PLAYER GH	3 REVISED PER ECO 930104	4/15/93	G. Robbins
513515-05	SHIPPING ASSEMBLY CDGS PLAYER FR	A PILOT PRODUCTION RELEASE	5/2/93	D. SHANNON
513515-06	SHIPPING ASSEMBLY CDGS PLAYER IT	B REVISED PER ECO 930157	5/21/93	D. SHANNON
513515-07	SHIPPING ASSEMBLY CDGS PLAYER SP	C REVISED PER ECO 930181	6/4/93	D. SHANNON
513515-08	SHIPPING ASSEMBLY CDGS PLAYER SG	D REVISED PER ECO 930203	7/07/93	B. DANTLING
513515-09	SHIPPING ASSEMBLY CDGS PLAYER SF	E REVISED PER ECO 930236	7/21/93	H. Harman
513515-10	SHIPPING ASSEMBLY CDGS PLAYER AU	F REVISED PER ECO 930241		
513515-11	SHIPPING ASSEMBLY CDGS PLAYER NH	G REVISED PER ECO 930252		
513515-12	SHIPPING ASSEMBLY CDGS PLAYER SD	H REVISED PER ECO 930252		
513515-13	SHIPPING ASSEMBLY CDGS PLAYER FN			
513515-14	SHIPPING ASSEMBLY CDGS PLAYER NE			
513515-15	SHIPPING ASSEMBLY CDGS PLAYER DN			
513515-16	SHIPPING ASSEMBLY CDGS PLAYER BF			
513515-17	SHIPPING ASSEMBLY CDGS PLAYER BD			
513515-18	SHIPPING ASSEMBLY CDGS PLAYER AL			
513515-19	SHIPPING ASSEMBLY CDGS PLAYER CEL			
513515-20	SHIPPING ASSEMBLY CDGS PLAYER PG			
513515-21	SHIPPING ASSEMBLY CDGS PLAYER JP NOT USED			
513515-22	SHIPPING ASSEMBLY CDGS PLAYER INT NOT USED			
513515-23	SHIPPING ASSEMBLY CDGS PLAYER LA NTSC			
513515-24	SHIPPING ASSEMBLY CDGS PLAYER PD NOT USED			
513515-25	SHIPPING ASSEMBLY CDGS PLAYER LA PAL			
513515-26	SHIPPING ASSEMBLY CDGS PLAYER LA BRAZIL			
513515-27	SHIPPING ASSEMBLY CDGS PLAYER SI			

ADD  
ECO 93279  
5/11/93

- NOTES:
4. 513515-xxC DENOTES SHIPPING ASSEMBLY W/O SLEEVE & CD'S
  3. 513515-xxB DENOTES SHIPPING ASSEMBLY W/O CD'S
  2. 513515-xxA DENOTES SHIPPING ASSEMBLY W/O SLEEVE
  1. SHEET 4 OF 4 SIZE D ASSY. DWG. 513515

© 1993 COMMODORE ELECTRONICS, LTD.  
 INFORMATION CONTAINED HEREIN IS THE UNPUBLISHED AND  
 CONFIDENTIAL PROPERTY OF COMMODORE ELECTRONICS, LTD.  
 USE, REPRODUCTION OR DISCLOSURE OF THIS INFORMATION  
 WITHOUT THE PRIOR WRITTEN PERMISSION OF COMMODORE  
 IS STRICTLY PROHIBITED. ALL RIGHTS RESERVED

Commodore	TITLE: SHIPPING ASSEMBLY CDGS PLAYER	
	Drawn by APH	Drawing # 513515 Sheet 1 of 4







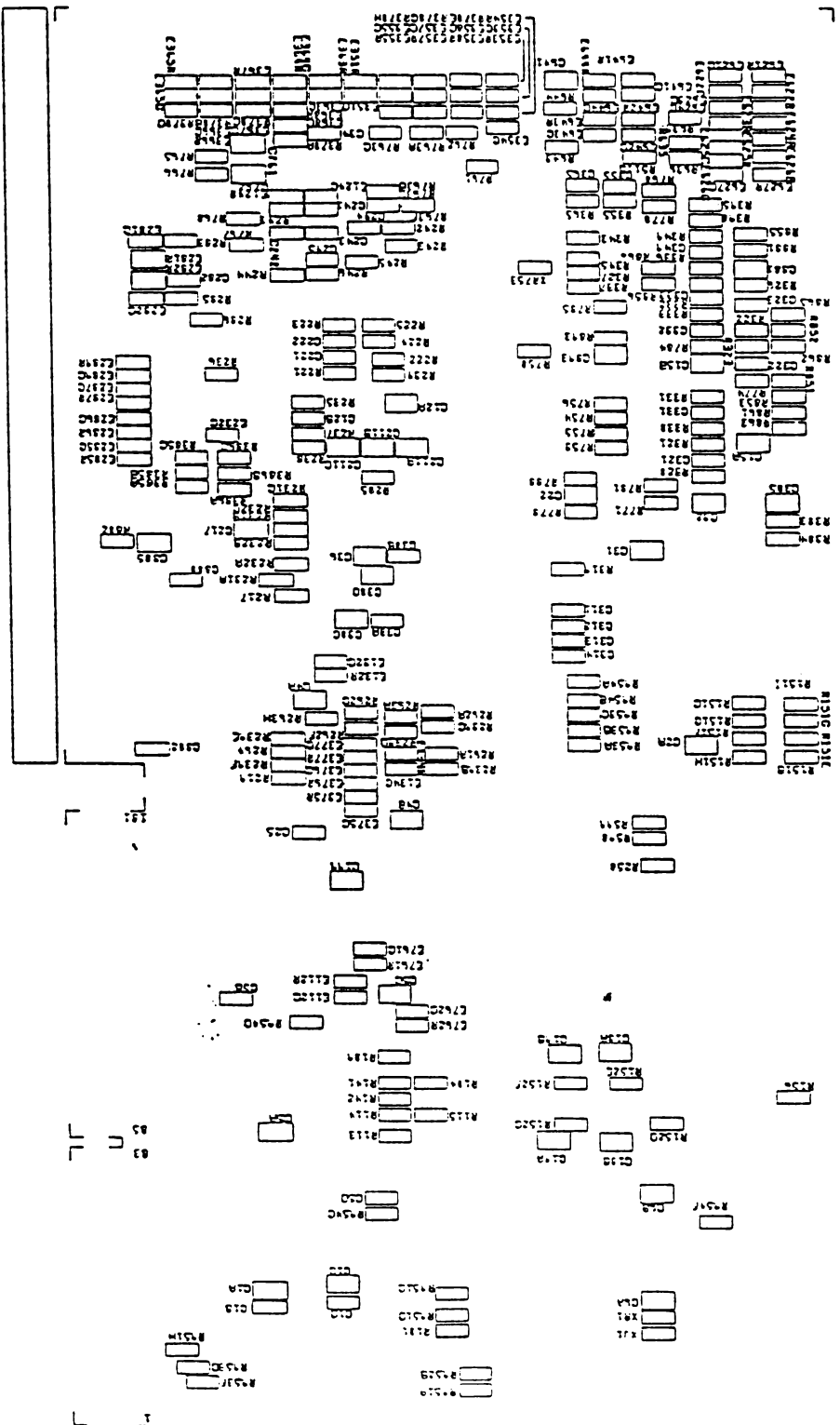




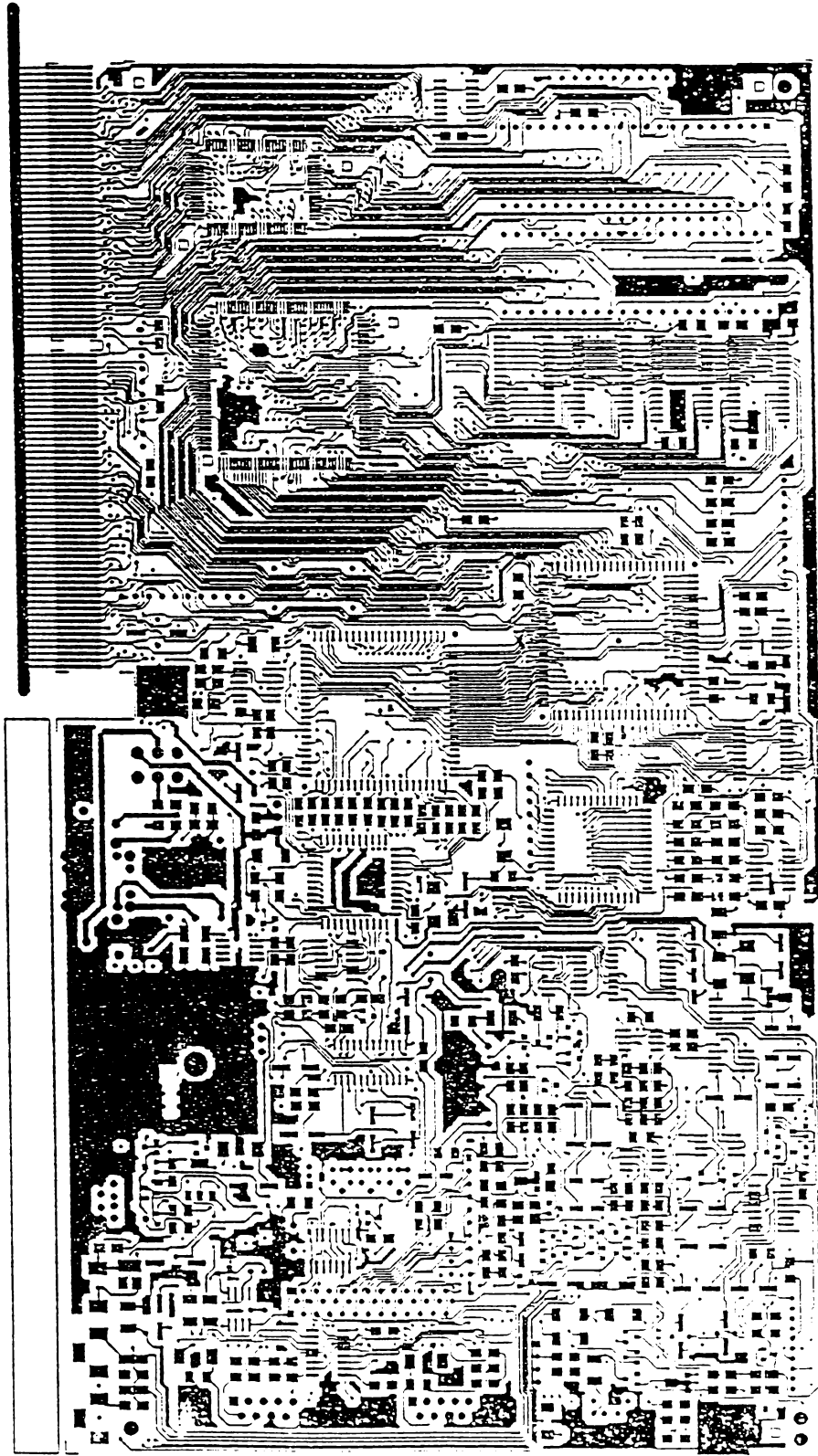


QTY. REQ. PER DASH #		ITEM #	PART NO.	DESCRIPTION	REF DES / NOTES
		201		CONNECTORS	
		202	390242-01	D-SUB, 9PIN, MALE, DB9P	CN1, CN2, (MOUSE/JOYSTICK)
		203	252122-03	RCA JACK, YELLOW	CN10, (COMPOSITE VIDEO)
		204	252122-01	RCA JACK, WHITE	CN4, (LEFT AUDIO)
		205	252122-02	RCA JACK, RED	CN3, (RIGHT AUDIO)
		206	390272-01	DIN, 4PIN, ROUND, SHIELDED	CN8, (CPU POWER)
		207	391648-01	CONNECTOR, HEADER, 10 PIN, 2.0mm, R-ANG.	CN14
		208	390534-03	CONNECTOR, FPC, VERTICAL, 26 PIN	CN17 (CD ROM)
		209	390851-02	MINI-DIN, 4PIN, ROUND	CN9 (S-VIDEO)
		210	390851-04	MINI-DIN, 6PIN, ROUND	CN13 (KEYBOARD)
		211	390851-06	MINI-DIN, 8PIN, ROUND	CN9 (SCART/S-VIDEO)
		212			
		213			
		214		MISCELLANEOUS	
		215	252182-01	SWITCH, ROCKER, DPDT, R-ANGLE, PC-MT	SW1
		216	252182-02	SWITCH, ROCKER, DPDT, R-ANGLE, PC-MT	SW1 SUD FOR ITEM 215
		217	252345-01	CRYSTAL, 4.433619 MHz	(Y451)
		218	325566-14	OSCILLATOR, 28.63636 MHz	(X1)
		219	252344-01	OSCILLATOR, 28.37516 MHz	(X1)
		220	391693-01	OSCILLATOR, 16.9344 MHz	X3
		221			
		222	313371-01	MODULATOR, MDG-VA3424	(X2)
		223	313371-05	MODULATOR, MDG-UD3626	(X2)
		224	904500-02	SWITCH, ROCKER, DPDT, R-ANG, PC-MT	SW1 SUD FOR ITEM 215
		225	904150-09	SOCKET, 42 PIN DIP	U6A
		226			
		227	365147-01	SYRINGE PACKED ADHESIVE	* = 0.5 grams per board
		228	365131-01	SOLDER BAR	* = 10 grams per board
		229	410304-01	SOLDER PASTE	* = 3.5 grams per board
		230		UNSTUFFED LOCATIONS	
		231			
		232			
		233		IC, 42PIN, DIP .600	U6B
		234		IC, 14PIN, SOIC	XU1
		235		Voltage Regulator, TO-220	XU2
		236		Diode, MELF	XD2
		237		Diode, SOT-23	D205, D206, D751, D752
		238		Resistors (1206)	R1205, R1230, R1247, R1343, R1346, R1599, R1765, R1852, R1862, R1893, XJ1, XJ11
		239		Capacitors (1206)	C215, E123C, E125C, E131C, E132C, E133C, E134C, E134C, E135C, E136C, E137C, E138C, E139C, E140C, E141C, E142C, E143C, E144C, E145C, E146C, E147C, E148C, E149C, E150C, E151C, E152C, E153C, E154C, E155C, E156C, E157C, E158C, E159C, E160C, E161C, E162C, E163C, E164C, E165C, E166C, E167C, E168C, E169C, E170C, E171C, E172C, E173C, E174C, E175C, E176C, E177C, E178C, E179C, E180C, E181C, E182C, E183C, E184C, E185C, E186C, E187C, E188C, E189C, E190C, E191C, E192C, E193C, E194C, E195C, E196C, E197C, E198C, E199C, E200C, E201C, E202C, E203C, E204C, E205C, E206C, E207C, E208C, E209C, E210C, E211C, E212C, E213C, E214C, E215C, E216C, E217C, E218C, E219C, E220C, E221C, E222C, E223C, E224C, E225C, E226C, E227C, E228C, E229C, E230C, E231C, E232C, E233C, E234C, E235C, E236C, E237C, E238C, E239C, E240C, E241C, E242C, E243C, E244C, E245C, E246C, E247C, E248C, E249C, E250C
		240		Capacitors (SM, C)	XC1, XC2
		241			C306
		242			
		243		Ferrite Beads	FB301, FB301B
		244		Connector, 2PIN, SIL	TP0
		245		Connector, 4PIN, SIL	TP6, TP7
		246		Connector, 10PIN, SIL	TP1, TP2, TP3, TP4, TP5, TP8, TP9
		247		Misc.	C247, Y452, CL1A, CL1C
		248			
		249			
		250			
		251			
		252			
		253			
		254			
		255			
		256			
		257			
		258			
		259			
		260			
		261			
		262			
		263			
		264			
		265			
		266			
		267			
		268			
		269			
		270			
		271			
		272			
		273			
		274			
		275			
		276			
		277			
		278			
		279			
		280			
		281			
		282			
		283			
		284			
		285			
		286			
		287			
		288			
		289			
		290			
		291			
		292			
		293			
		294			
		295			
		296			
		297			
		298			
		299			
		300			
		301			
		302			
		303			
		304			
		305			
		306			
		307			
		308			
		309			
		310			
		311			
		312			
		313			
		314			
		315			
		316			
		317			
		318			
		319			
		320			
		321			
		322			
		323			
		324			
		325			
		326			
		327			
		328			
		329			
		330			
		331			
		332			
		333			
		334			
		335			
		336			
		337			
		338			
		339			
		340			
		341			
		342			
		343			
		344			
		345			
		346			
		347			
		348			
		349			
		350			
		351			
		352			
		353			
		354			
		355			
		356			
		357			
		358			
		359			
		360			
		361			
		362			
		363			
		364			
		365			
		366			
		367			
		368			
		369			
		370			
		371			
		372			
		373			
		374			
		375			
		376			
		377			
		378			
		379			
		380			
		381			
		382			
		383			
		384			
		385			
		386			
		387			
		388			
		389			
		390			
		391			
		392			
		393			
		394			
		395			
		396			
		397			
		398			
		399			
		400			
		401			
		402			
		403			
		404			
		405			
		406			
		407			
		408			
		409			
		410			
		411			
		412			
		413			
		414			
		415			
		416			
		417			
		418			
		419			
		420			
		421			
		422			
		423			
		424			
		425			
		426			
		427			
		428			
		429			
		430			
		431			
		432			
		433			
		434			
		435			
		436			
		437			
		438			
		439			
		440			
		441			
		442			
		443			
		444			
		445			
		446			
		447			
		448			
		449			
		450			
		451			
		452			
		453			
		454			
		455			
		456			
		457			
		458			
		459			

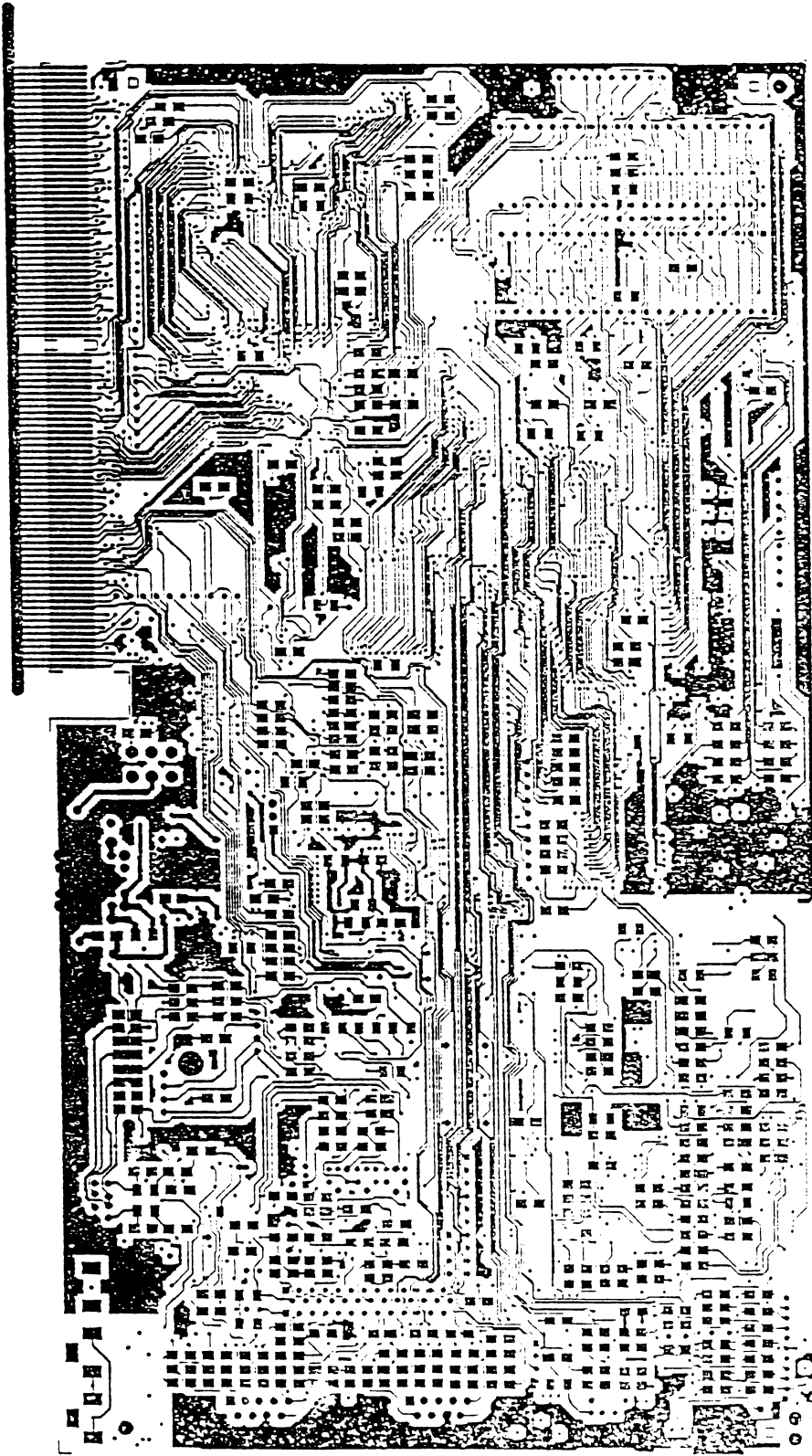




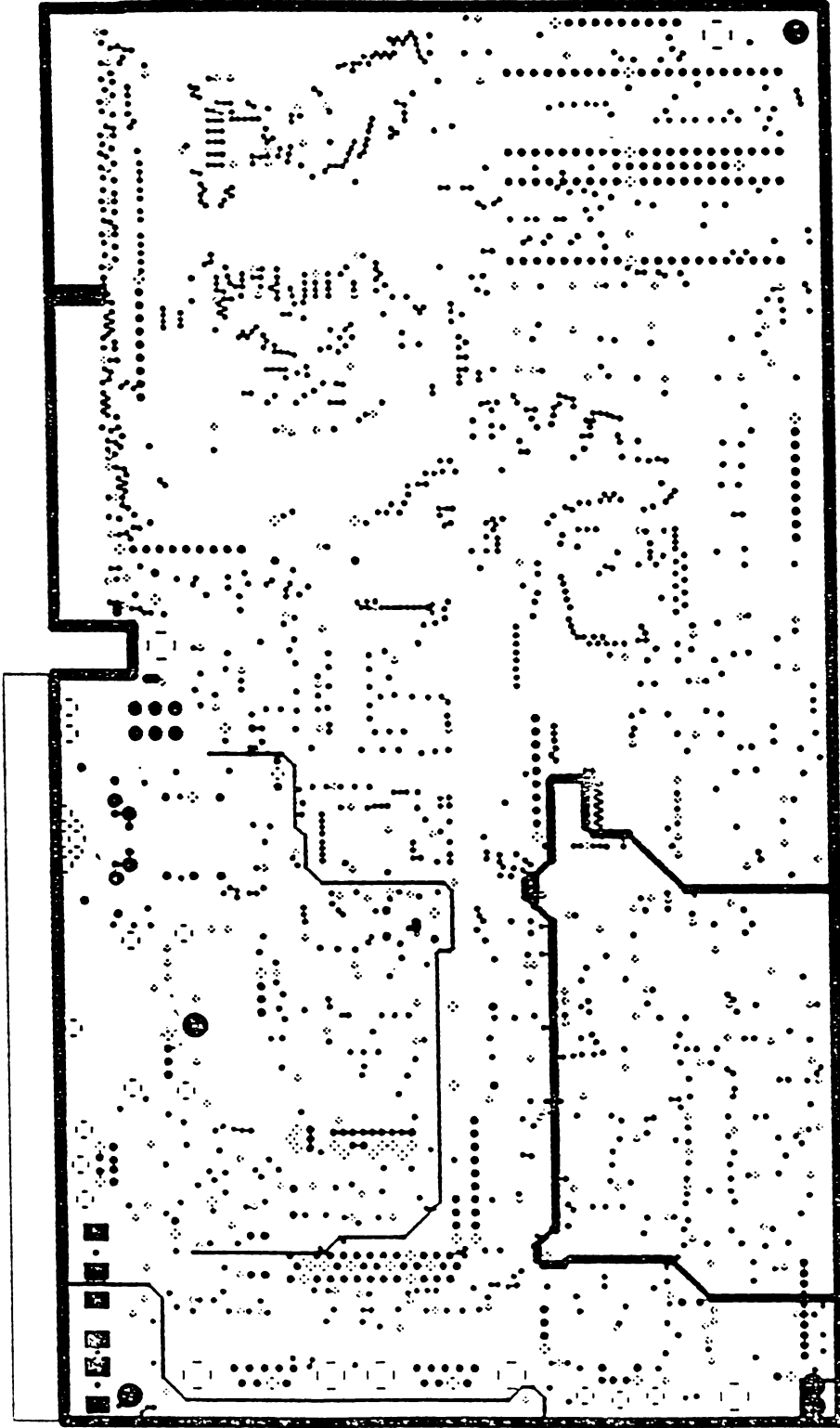
© Commodore Electronics Ltd.  
 Spellbound Rev 4 - CD/GAMES 9181EM  
 ARTHOR 365430-01 / FAB DAC 365434-01  
 CONTACT: George Robbins 215-431-9349  
 Michael Ninn 215-431-4303  
 SILKSCREEN BOTTOM



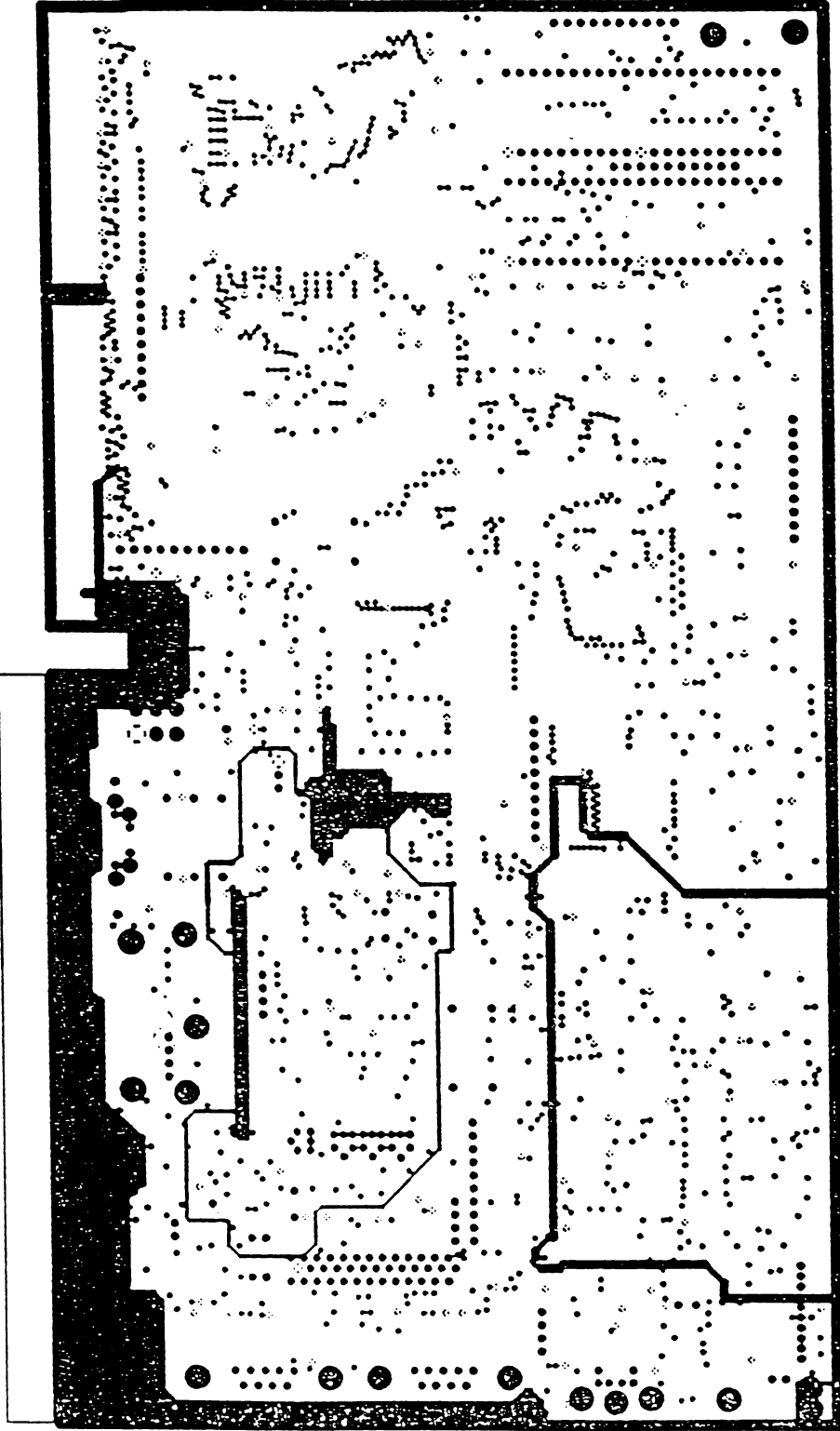
© Commodore Electronics Ltd.  
Spellbound Rev 4 - CD/GAMES SYSTEM  
ARTWORK 365438-01 / FAB DMC 365439-01  
CONTACT: George Robbins 215-431-9349  
Michael Nines 215-431-9303  
COMPONENT SIDE



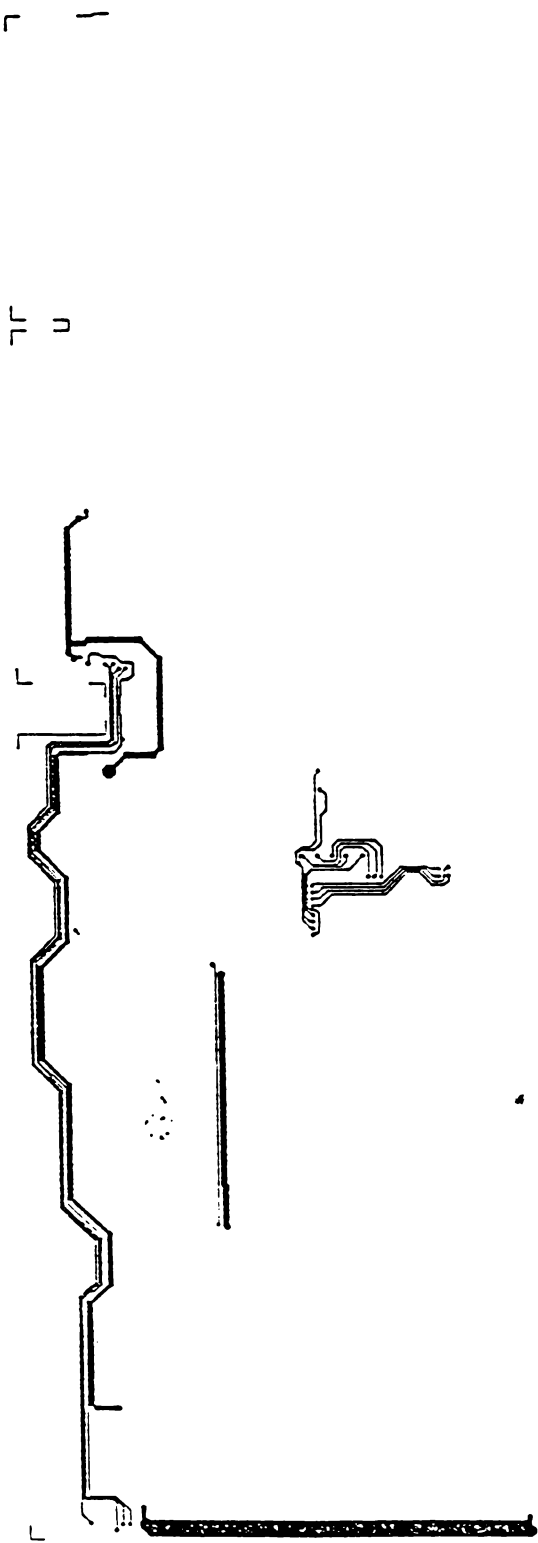
© Commodore Electronics Ltd.  
Spellbound Rev 4 - CD/GAMES SYSTEM  
ARTWORK 365430-01 / FAB DMC 365439-01  
CONTACT: George Robbins 215-431-9349  
          Michael Nines 215-431-9303  
          GAINFR STAF



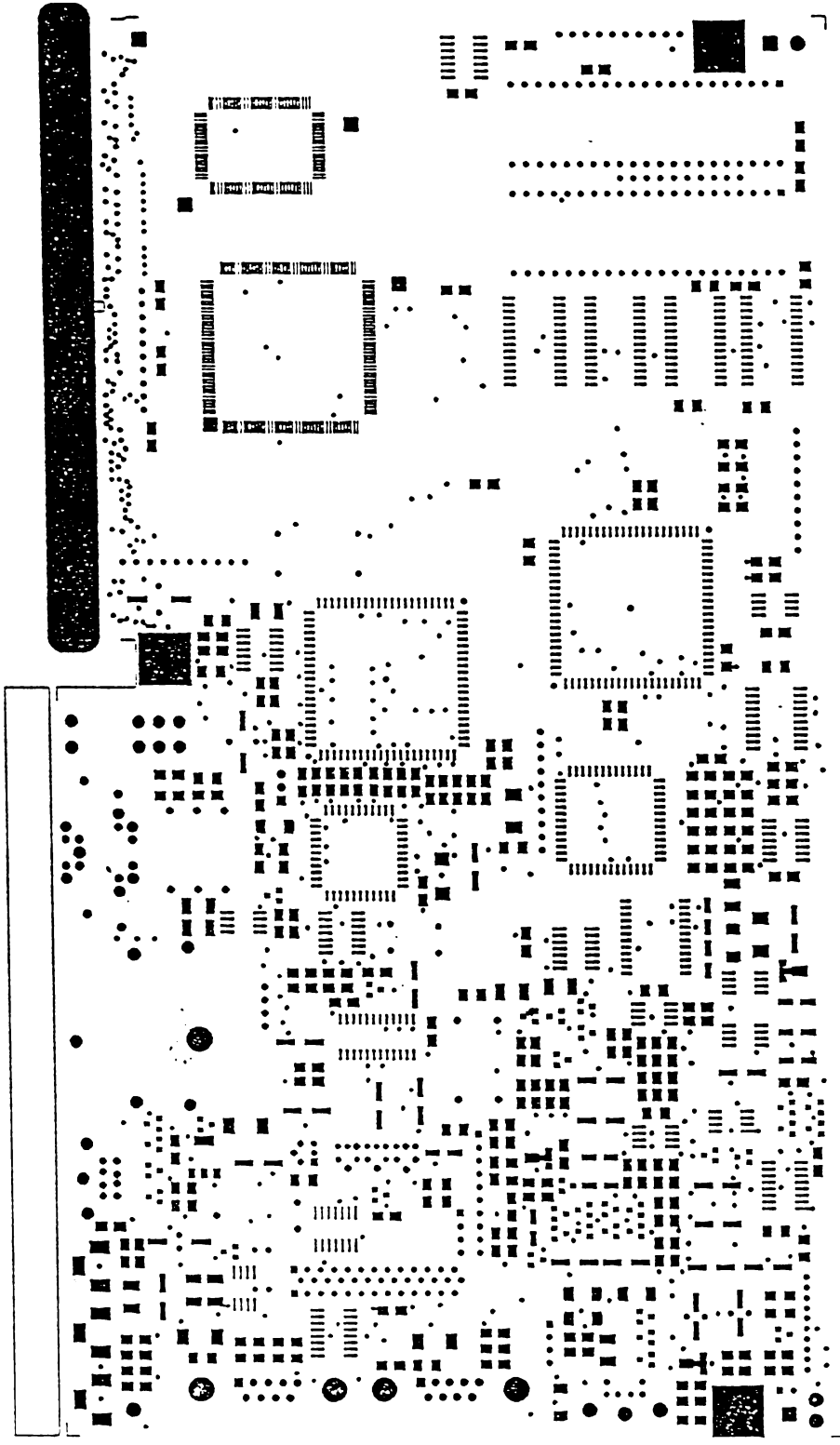
© Commodore Electronics Ltd.  
Spellbound Rev 4 - CD/GAMES SYSTEM  
ARTWORK 365438-01 / FAB DMC 365439-01  
CONTACT: George Robbings 215-431-9349  
Michael Niles 215-431-9303  
LAYER 2 (CML)



© Commodore Electronics Ltd.  
Spellbound Rev 4 - CD/GAMES SYSTEM  
ARTWORK 365430-01 / FAB DMC 365431-01  
CONTACT: George Robbline 215-431-9349  
Michael Nines 215-431-9303



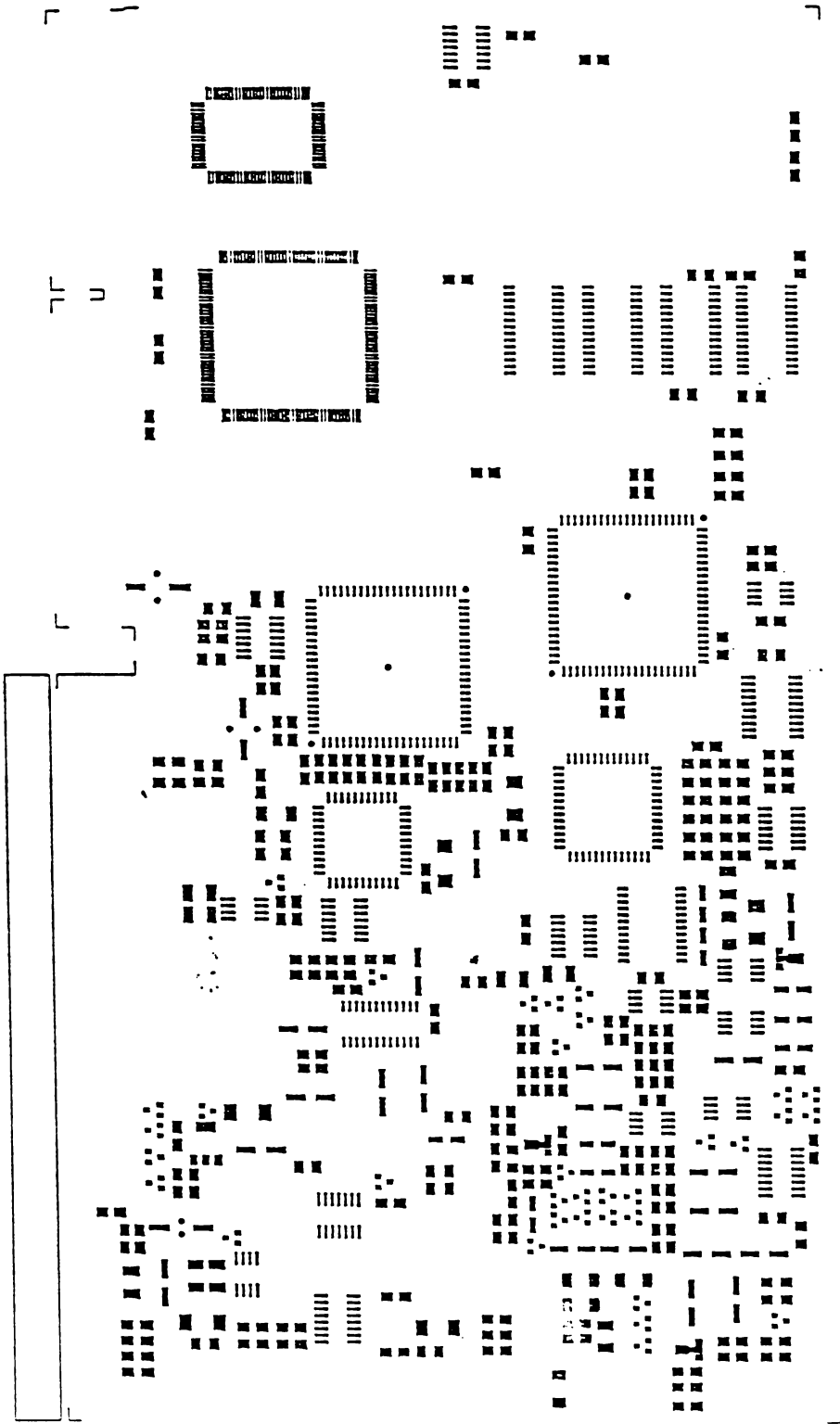
© Commodore Electronics Ltd.  
 Spellbound Rev 4 - CD/GAMES SYSTEM  
 ARTWORK 365430-01 / FAB DMC 365439-01  
 CONTACT: George Robbins 215-431-9349  
 Michael Niles 215-431-9303  
 VCC OVERLAY LAYER



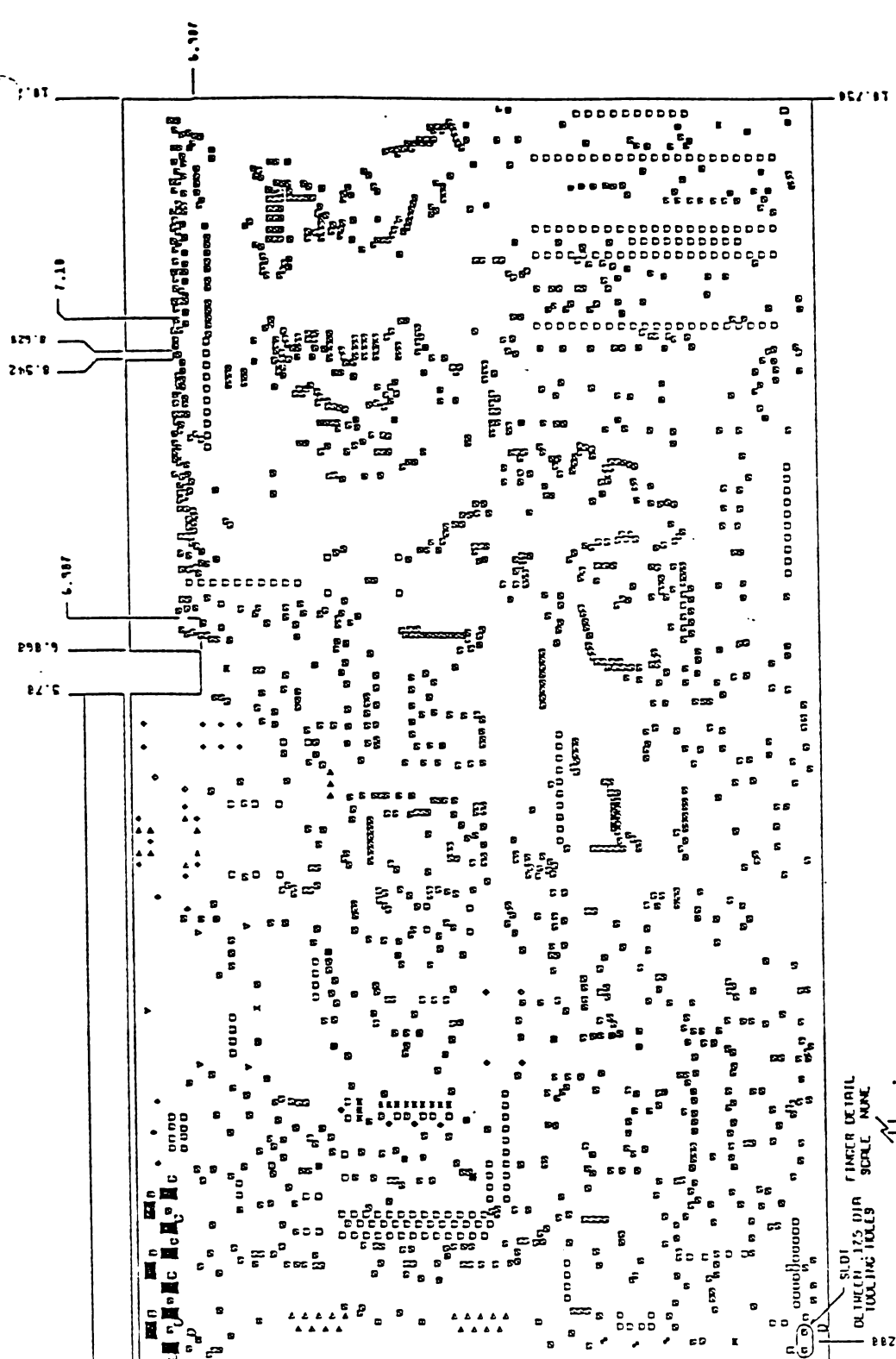
© Commodore Electronics Ltd.  
Spellbound Rev 4 - CD/GAMES SYSTEM  
ARTWORK 365438-01 / FAB DWG 365439-01  
CONTACT: George Robbins 215-431-9349  
Michael Nines 215-431-9303  
501 DER MARK TWP



© Commodore Electronics Ltda.  
Spellbound Rev 4 - CD/GAMES SYSTEM  
ARTWORK 365430-01 / FAB DWG 365439-01  
CONTACT: George Robbins 215-431-9319  
Michael Ninas 215-431-9303



© Commodore Electronics Ltda.  
Spellbound Rev 4 - CD/GAMES SYSTEM  
ARTWORK 365430-01 / FAD DWG 365439-01  
CONTACT: George Robbins 215-431-9349  
          Michael Nines 215-431-9303  
          CNR PASTE STENCIL



DIAMETER COUNT : ALL HOLES

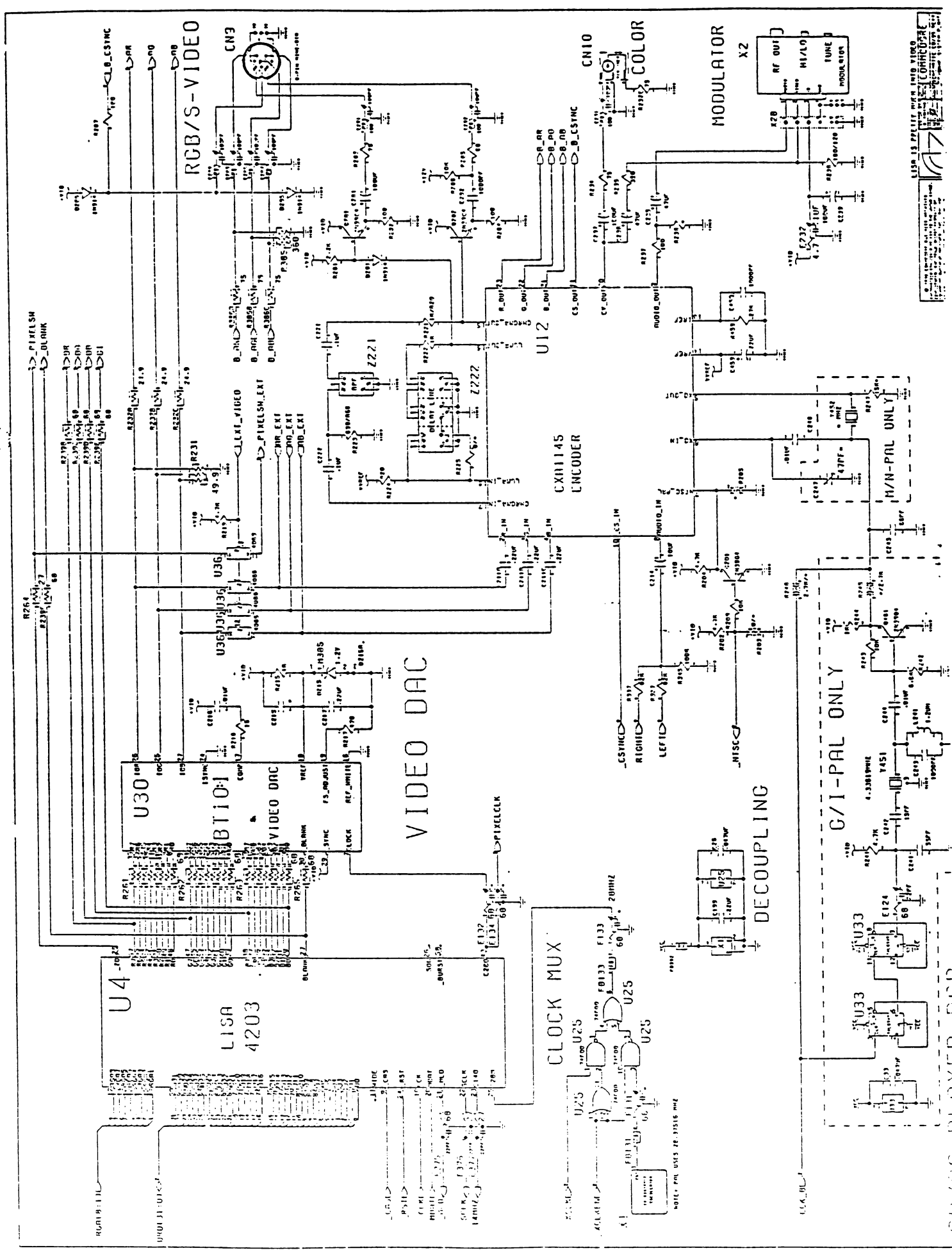
0.037	274
0.052	29
0.089	5
0.10	1541
0.125	4
0.092	12
0.073	15
0.084	3
0.093	3
0.136	3
0.157	1
0.025	12
0.125	4
NO PLATING	0.00
0.125 X .158 DR.DMG HOLE	
0.04 X .10 DR.DMG HOLE	
0.10 X .04 DR.DMG HOLE	
3 TOOLING HOLES No Plating MARKED D	
1 .157 HOLE NO PLATING	

Commodore Electronics Ltda.  
 Spellbound Rev 4 - CD/GAMES SYSTEM  
 ARTHOR 365430-01 / FAB DMG 365439-01  
 CONTACT: George Robbins 215-431-7349  
 Michael Ninas 215-431-9303  
 DRILL LEGEND









0. THIS SCHEMATIC IS THE PROPERTY OF  
 APPLE COMPUTER, INC. ALL RIGHTS RESERVED.  
 1. THIS SCHEMATIC IS THE PROPERTY OF  
 APPLE COMPUTER, INC. ALL RIGHTS RESERVED.  
 2. THIS SCHEMATIC IS THE PROPERTY OF  
 APPLE COMPUTER, INC. ALL RIGHTS RESERVED.  
 3. THIS SCHEMATIC IS THE PROPERTY OF  
 APPLE COMPUTER, INC. ALL RIGHTS RESERVED.  
 4. THIS SCHEMATIC IS THE PROPERTY OF  
 APPLE COMPUTER, INC. ALL RIGHTS RESERVED.  
 5. THIS SCHEMATIC IS THE PROPERTY OF  
 APPLE COMPUTER, INC. ALL RIGHTS RESERVED.  
 6. THIS SCHEMATIC IS THE PROPERTY OF  
 APPLE COMPUTER, INC. ALL RIGHTS RESERVED.  
 7. THIS SCHEMATIC IS THE PROPERTY OF  
 APPLE COMPUTER, INC. ALL RIGHTS RESERVED.  
 8. THIS SCHEMATIC IS THE PROPERTY OF  
 APPLE COMPUTER, INC. ALL RIGHTS RESERVED.  
 9. THIS SCHEMATIC IS THE PROPERTY OF  
 APPLE COMPUTER, INC. ALL RIGHTS RESERVED.  
 10. THIS SCHEMATIC IS THE PROPERTY OF  
 APPLE COMPUTER, INC. ALL RIGHTS RESERVED.

LISA IS PRELIMINARY VIDEO  
 SCHEMATIC

NOTE: PIN U45 78-31516 PINE















**This was brought to you**

**from the archives of**

**<http://retro-commadore.eu>**